



# PRODUCT BROCHURE

IP69K Hygienic Food Grade Enclosures

# IP69K Hygienic Electrical Enclosures

# H

## Stainless Steel Grade 304

**SLOPING ROOF | SINGLE DOOR | HYGIENIC FOOD GRADE | IP69K IK07**



The IP Enclosures H range of IP69K hygienic food grade electrical enclosures are designed for applications within the food & beverage, pharmaceutical and other industries that require high hygienic standards.

## Features & Specifications

IP69K hygienic food grade electrical enclosures are designed to prevent contamination and are suitable for the food & beverage, pharmaceutical and other industries that require high hygienic standards.

**Protection:** IP66 IK07, IP69K

**Standard:** DGUV EN1672-2, IEC/EN62208, EN/AS60529, ISO20653, UL508A  
EHEDG RoHS Compliant



**Material:**

- Body: 1.5mm Grade 304 Stainless Steel. Surface Finish: 0.2 microns
- Door: 1.5mm Grade 304 Stainless Steel. Surface Finish: 0.2 microns
- Device Mounting Plate: Galvanised Steel Sheet (Optional: Stainless Steel)
- Seal: Blue Silicone FDA compliant

**Body:** The robust monoblock body with 30° sloping roof is fabricated using 1.5mm Grade 304 Stainless Steel. It is designed to be completely smooth and without crevices and without concave angles to facilitate cleaning and avoid deposits. The body is designed to promote self draining for ease of hygienic cleaning.

**Door:** The door is fabricated using 1.5mm Grade 304 Stainless Steel and includes specially cast internal hinges to allow for removal of the seals. The door is designed for a 115° opening with hinges on the right hand side.

**Seal:** Blue silicone seal, FDA compliant for food production areas. Replaceable.

**Lock:** IP69K Stainless Steel Hygiene lock with seal. Dirt resistant and easy to clean.

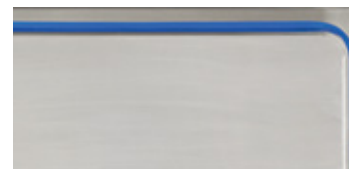
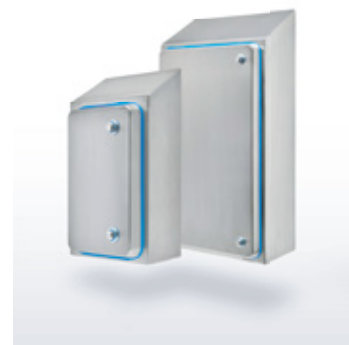
**Device Mounting Plate:** Fabricated using galvanised steel sheet. Supplied fitted.

**Floor Standing Cabinets:** Cabinets marked with an asterisk "\*" below are provided with a base with adjustable feet.

**Accessories:** Hygienic Spacer Bracket Kit. SKU: IP-HSB-KIT (Set of 4)



Part Number	Enclosure Size	Overall Height	Device Plate	Locks	Mass
SKU	H x W x D (mm)	H2 (mm)	H x W (mm)	Qty	Kg
IP-H302015	300 x 200 x 150	388	245 x 145	1	7.5
IP-H453821	450 x 380 x 210	570	395 x 325	2	12.5
IP-H453830	450 x 380 x 300	622	395 x 325	1	18
IP-H603821	600 x 380 x 300	720	545 x 325	2	20.5
IP-H605021	600 x 500 x 210	720	545 x 445	2	21.5
IP-H456030	450 x 600 x 300	622	395 x 545	2	25
IP-H606021	600 x 600 x 210	720	545 x 545	2	26.5
IP-H508030	500 x 800 x 300	672	445 x 745	2	39.5
IP-H808030	800 x 800 x 300	972	745 x 745	2	47.5
IP-H1008030	1000 x 800 x 300	1172	945 x 745	3	57
IP-H1208030	1200 x 800 x 300	1372	1145 x 745	3	76
IP-H1806041*	1800 x 602 x 410	2023	1715 x 489	3 Point	88
IP-H1808051*	1800 x 802 x 510	2082	1715 x 689	3 Point	114



# IP69K Pushbutton Enclosures

Stainless Steel Grade 304

**HPB**

**IP66 IK08 | IP69K**



The HPB range of IP69K Pushbutton Enclosures are designed for applications within the food & beverage, pharmaceutical and other industries.

## Features & Specifications

IP69K pushbutton enclosures are designed to prevent contamination and are suitable for the food & beverage, pharmaceutical and other industries.

**Protection:** IP66 IK08, IP69K, Nema Type 1, 12, 4, 4x.



**Standard:** EN/AS60529, ISO20653, UL508A, RoHS Compliant

### Material:

- Body: 1.0mm Grade 304 Stainless Steel. Surface Finish: 0.2 microns
- Cover: 1.0mm Grade 304 Stainless Steel. Surface Finish: 0.2 microns
- Seal: Blue Silicone FDA compliant

**Holes:** 22.5

**Body:** The body is fabricated using 1.0mm Grade 304 Stainless Steel. It is designed to be completely smooth and without crevices and without concave angles to facilitate cleaning and avoid deposits. The body is designed to promote self draining for ease of hygienic cleaning.

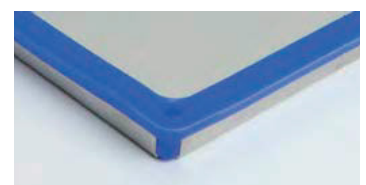
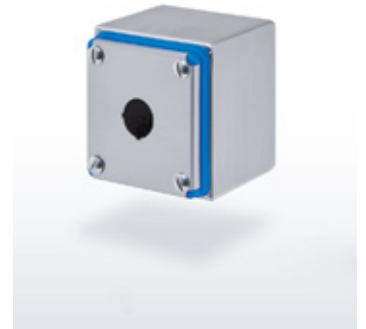
**Cover:** The cover is fabricated using 1.0mm Grade 304 Stainless Steel and includes a clip-in silicone seal.

**Seal:** Blue silicone seal, FDA compliant for food production areas. Replaceable.

**Accessories:** Hygienic Wall Mounting Brackets. SKU: IP-HWMB (Set of 2)

Part Number	Enclosure Size	Number of Holes	Hole Centres	Useable Depth	Mass
SKU	H x W x D (mm)	Dia.22.5mm	mm	mm	Kg
IP-HPB1	90 x 90 x 90	1	-	75	0.52
IP-HPB2	140 x 90 x 90	2	55	75	0.68
IP-HPB3	200 x 90 x 90	3	55	75	0.91
IP-HPB4	280 x 90 x 90	4	60	75	1.11

# HPB



# IP69K Terminal Boxes

## Stainless Steel Grade 304

**HTB**




**IP66 IK08 | IP69K**



The HTB range of IP69K Terminal Boxes are designed for applications within the food & beverage, pharmaceutical and other industries.

## Features & Specifications

IP69K terminal boxes are designed to prevent contamination and are suitable for the food & beverage, pharmaceutical and other industries.

**Protection:** IP66 IK08, IP69K, Nema Type 1, 12, 4, 4x.    N° file E231227

**Standard:** EN/AS60529, ISO20653, UL508A, RoHS Compliant

### Material:

- Body: 1.0 to 1.2mm Grade 304 Stainless Steel. Surface Finish: 0.2 microns
- Cover: 1.0 to 1.2mm Grade 304 Stainless Steel. Surface Finish: 0.2 microns
- Seal: Blue Silicone FDA compliant

**Holes:** 0 22.5

**Body:** The body is fabricated using 1.0mm to 1.2mm Grade 304 Stainless Steel. It is designed to be completely smooth and without crevices and without concave angles to facilitate cleaning and avoid deposits. The body is designed to promote self draining for ease of hygienic cleaning.

**Cover:** The cover is fabricated using 1.0mm to 1.2mm Grade 304 Stainless Steel and includes a clip-in silicone seal.

**Seal:** Blue silicone seal, FDA compliant for food production areas. Replaceable.

**Accessories:** Wall Mounting Brackets. SKU: IP-HWMB (Set of 2)

Part Number	Enclosure Size	Useable Depth	Mass
SKU	H x W x D (mm)	mm	Kg
IP-HTB1010	100 x 100 x 100	85	0.72
IP-HTB1610	160 x 100 x 100	85	1.01
IP-HTB2010	200 x 100 x 100	85	1.21
IP-HTB1616	160 x 160 x 100	85	1.43
IP-HTB2516	250 x 160 x 100	85	2.05
IP-HTB2020	200 x 200x 100	85	2.12

# HTB





IP ENCLOSURES PTY LTD

ABN 17 168 921 319

Head Office: 19-27 Fren Chaplin Circuit, Bells Creek QLD 4551

[sales@ipenclosures.com.au](mailto:sales@ipenclosures.com.au) | [www.ipenclosures.com.au](http://www.ipenclosures.com.au)

T: 1300 576 094 | + 61 7 5450 1489

GLOBAL DISTRIBUTION: UK Europe USA UAE NZ Asia-Pacific