

SDW 19" Data Rack

IP-SDW6RU45

STEEL | WALL MOUNT | SINGLE DOOR | IP66

19" 6RU x 450D

IP Enclosures SDW range of IP66 19" data racks are designed for outdoor applications to house sensitive data network equipment in harsh environments. They are suitable for internal and external installations. All IP Enclosures are built to precision to ensure consistent high quality standards.

Protection: IP66 IK10

Standards (& Conformities): IEC/EN 60529, IEC/EN 62208, EIA-310-D, RoHS



Rack Unit Size: 6RU

Material:

- Enclosure Body: 1.5mm galvanised steel sheet
- Enclosure Door: 1.5mm galvanised steel sheet
- 19" Data Rack Rails: 1.5mm galvanised steel sheet
- Gland Plate: 1.5mm galvanised steel sheet
- Enclosure Seal: Polyurethane. UL listed.

Body & 19" Rails: The robust monoblock body is 1.5mm galvanised steel sheet. Precision automated manufacturing equipment ensures accuracy and consistent high quality. Flat face sealing surfaces increase seal life. A galvanised steel gland plate is also incorporated into the bottom face. 19" data rack rails are fitted. 600mm deep racks include front and rear rails.

Enclosure Door: The surface mounted door is 1.5mm galvanised steel sheet. It incorporates concealed removable hinges with captive pins. Doors are also designed for a 110° opening. Door with windows are available as an accessory.

Enclosure Seal: A high quality machine-applied full perimeter UL listed Polyurethane seal foamed in place (FIP) provides excellent sealing over a long life. Temperature resistance -40°C to 80°C (160°C short term loading).

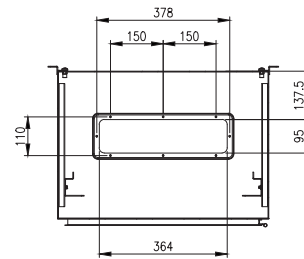
Enclosure Lock: 5mm double bit insert quarter turn lock with key.

Gland Plate: Gland plate is incorporated into the bottom face of the enclosure for cable management. It is provided with gaskets and fasteners. The size and quantity vary according to enclosure size.

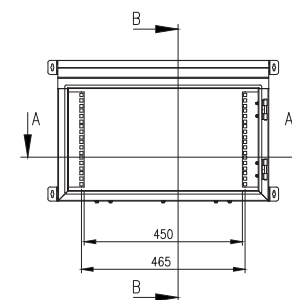
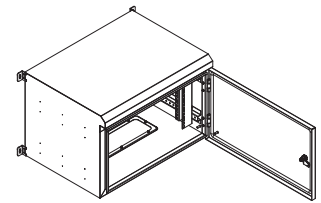
Surface Treatment: UL approved AkzoNobel epoxy polyester powder-coated with a textured finish. 80-120 micron average thickness. Colour RAL7035. (Other colours available upon request).

Mass: 22.0Kg.

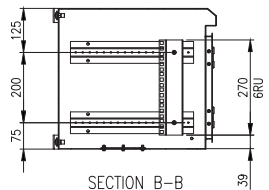
Maximum Weight of Contents: 95.4Kg.



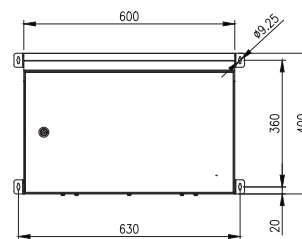
SECTION A-A



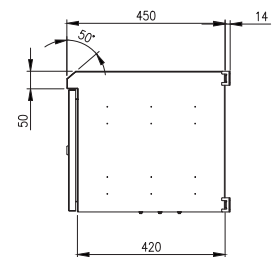
FRONT VIEW-DOOR REMOVED



SECTION B-B



FRONT VIEW



SIDE VIEW

SDW 19" Data Rack

IP-SDW6RU45

STEEL | WALL MOUNT | SINGLE DOOR | IP66

19" 6RU x 450D

ACCESSORIES:

| Part Number | Description |
|--------------------|--|
| IP-SDDINPANEL1 | 1RU 19" DIN Terminal Rail |
| IP-SDCOVER1 | 1RU 19" Cover Panel |
| IP-EMH1 | 1RU 19" Cover Panel (Ventilated) |
| IP-SDDINPANEL2 | 2RU 19" DIN Terminal Rail |
| IP-SDCOVER2 | 2RU 19" Cover Panel |
| IP-EMH2 | 2RU 19" Cover Panel (Ventilated) |
| IP-SDDINPANEL3 | 3RU 19" DIN Terminal Rail |
| IP-SDCOVER3 | 3RU 19" Cover Panel |
| IP-EMH3 | 3RU 19" Cover Panel (Ventilated) |
| IP-SDDP3 | 3RU 19" Distribution Board (Supplied with Cover Panel) |
| IP-SDDINBOX4RU | 4RU 19" Rack Mounted DIN Rail Housing |
| IP-SDBOX4RU | 4RU 19" Rack Mount Housing |
| IP-SDDINBOX6RU | 6RU 19" Rack Mounted DIN Rail Housing |
| IP-SDBOX6RU | 6RU 19" Rack Mount Housing |
| IP-RCLF120 | 1RU 19" Fixed Shelf; 200mmD |
| IP-RNG1U19 | 1RU Cable Organiser for Data Rack |
| IP-M6SCREW-CAGENUT | M6 Cage Nut and Screw for 19" Data Racks - Pack of 50 |

CERTIFICATES:

IEC 60529 Degrees of protection provided by enclosures: Certificate AB-0386-T 2311.14.01/00

IEC/EN 62208 Empty Enclosures for low-voltage switchgear and controlgear assemblies: Certificate 0366932-TSE-01/01

CE Certificate of Compliance: Certificate SZT-24 MA 33485-1

UKCA Certificate of Compliance: Certificate SZT-25 MA 38734-1

Products are manufactured to Quality, Safety and Environmental Standards.

WARRANTY: 5 years.