



# PRODUCT BROCHURE

Pushbutton & HMI Enclosures

# Pushbutton Enclosures

SSPB

Stainless Steel Grade 316/316L

FLAT ROOF and SLOPING ROOF | IP66 | 22mm Hole



## Features & Specifications

IP Enclosures SSPB range of grade 316/316L stainless steel pushbutton enclosures are suitable for extreme duty heavy industrial applications. They are available in 1 hole, 2 hole, 3 hole, 4 hole and 6 hole configurations with a flat roof or a sloping roof.

**Protection:** Complies with IP66

**Standard:** IEC/EN/AS60529, RoHS 

**Material:**

- Body: 1.5mm Grade 316/316L Stainless Steel
- Door: 1.5mm Grade 316/316L Stainless Steel
- Seal: Polyurethane. UL listed.

**Surface Finish:** 0.4 micron Ra surface brushed finish

**Body:** The robust monoblock body is fabricated using 1.5mm Grade 316/316L Stainless Steel. Flat face sealing surfaces are provided to increase seal life. Integral mounting flanges with slotted mounting holes are incorporated for ease of installation.

**Lid/Door:** The robust screwed lid/door is fabricated using 1.5mm Grade 316/316L Stainless Steel and incorporates a high quality machine-applied foamed in place (FIP) Polyurethane seal.

**Seal:** A high quality machine-applied full perimeter UL listed Polyurethane seal foamed in place (FIP) provides excellent sealing over a long life. Temperature resistance -40°C to 80°C (160°C short term loading).



### FLAT ROOF

Part Number	Description
<b>Standard</b>	<b>Number of 22mm Holes</b>
IP-SSPB1	1 Hole
IP-SSPB2	2 Hole
IP-SSPB3	3 Hole
IP-SSPB4	4 Hole
IP-SSPB6	6 Hole (2 Columns of 3)



### SLOPING ROOF

Part Number	Description
<b>Standard</b>	<b>Number of 22mm Holes</b>
IP-SSSRPB1	1 Hole
IP-SSSRPB2	2 Hole
IP-SSSRPB3	3 Hole
IP-SSSRPB4	4 Hole
IP-SSSRPB6	6 Hole (2 Columns of 3)



# HMI Enclosures

Steel | Powder Coated

HMI

FRONT PANEL | REAR DOOR | IP66



The HMI Enclosure range is an aesthetic and ergonomic control panel system. The simplified flat front panel is designed to mount operator interfaces. Access is via a lockable rear door incorporating a device mounting plate. HMI Enclosures are designed for use with IP Enclosures Support Arm Systems. *(Touch Panel not included)*

## Features & Specifications

The IP Enclosures range of IP66 HMI Enclosures are an aesthetic and ergonomic control panel system. The simplified flat front panel is designed to mount operator interfaces. Access is via a lockable rear door. HMI Enclosures are designed for use with IP Enclosures Support Arm Systems.

**Protection:** Complies with IP66

**Standard:** AS/EN/IEC60529

**Material:**

- Enclosure Body: 2.0mm galvanised steel sheet
- Enclosure Door: Galvanised steel sheet
- Enclosure Front Panel: Galvanised steel sheet
- Enclosure Seal: Polyurethane

**Body:** The robust monoblock body is fabricated using 2.0mm galvanised steel sheet. Cutting, pressing and full continuous seam welding using precision automated manufacturing equipment ensures accuracy and consistent high quality. Flat face sealing surfaces are provided to increase seal life. M6 earth studs and equipment mounting studs are provided.

**Door:** The robust surface mounted door is fabricated using galvanised steel sheet and incorporates concealed removable hinges with captive pins. The door is designed for a 110° opening. The door contains an integral device mounting plate and a high quality machine-applied foamed in place (FIP) Polyurethane seal.

**Front Panel:** The front panel is fabricated using galvanised steel sheet. It is removable via internal fasteners to cut or machine holes to mount HMI's and operator devices. Sealing is achieved via a high quality machine-applied foamed in place (FIP) Polyurethane seal.

**Seals:** A high quality machine-applied full perimeter UL listed Polyurethane seal foamed in place (FIP) provides excellent sealing over a long life. Temperature resistance -40°C to 80°C (160°C short term loading).

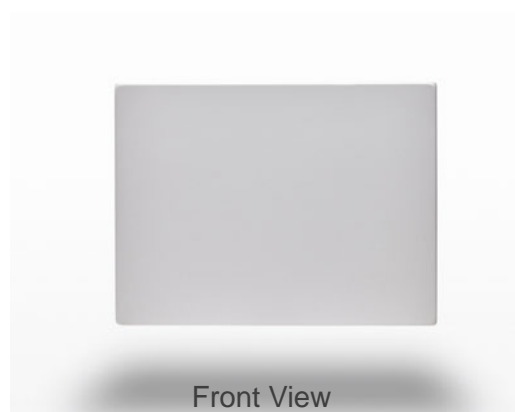
**Lock:** Chrome 3mm double bit insert quarter turn lock with key.

**Surface Treatment:** UL approved epoxy polyester powder coated with a textured finish. 80-120 micron average thickness. (RAL7035 Standard)

Steel



Part Number	Size	SKU Suffix
SKU	H x W x D (mm)	Optional Colour
IP-HMI303015	300 H x 300 W x 150 D	-BLK -OR -RED
IP-HMI304015	300 H x 400 W x 150 D	-BLK -OR -RED
IP-HMI304025	300 H x 400 W x 250 D	-BLK -OR -RED
IP-HMI354515	350 H x 450 W x 150 D	-BLK -OR -RED
IP-HMI354525	350 H x 450 W x 250 D	-BLK -OR -RED
IP-HMI406015	400 H x 600 W x 150 D	-BLK -OR -RED
IP-HMI406025	400 H x 600 W x 250 D	-BLK -OR -RED



Front View



Rear View

# HMI Enclosures

## 316 Stainless Steel

SSHMI

FRONT PANEL | REAR DOOR | IP66



The stainless steel HMI Enclosure range is an aesthetic and ergonomic control panel system. The simplified flat front panel is designed to mount operator interfaces. Access is via a lockable rear door incorporating a device mounting plate.  
*(Touch Panel not included)*

## Features & Specifications

The IP Enclosures range of IP66 stainless steel HMI Enclosures are an aesthetic and ergonomic control panel system. The simplified flat front panel is designed to mount operator interfaces. Access is via a lockable rear door. HMI Enclosures are designed for use with IP Enclosures Support Arm Systems.

**Protection:** Complies with IP66

**Standard:** AS/EN/IEC60529

**Material:**

- Enclosure Body: Grade 316/316L Stainless Steel
- Enclosure Door: Grade 316/316L Stainless Steel
- Enclosure Front Panel: Grade 316/316L Stainless Steel
- Enclosure Seal: Polyurethane

**Body:** The robust monoblock body is fabricated using 2.0mm grade 316 stainless steel. Cutting, pressing and full continuous seam welding using precision automated manufacturing equipment ensures accuracy and consistent high quality. Flat face sealing surfaces are provided to increase seal life. M6 earth studs and equipment mounting studs are provided.

**Door:** The robust surface mounted door is fabricated using grade 316 stainless steel and incorporates concealed removable hinges with captive pins. The door is designed for a 110° opening. The door contains an integral device mounting plate and a high quality machine-applied foamed in place (FIP) Polyurethane seal.

**Front Panel:** The front panel is fabricated using grade 316 stainless steel. It is removable via internal fasteners to cut or machine holes to mount HMI's and operator devices. Sealing is achieved via a high quality machine-applied foamed in place (FIP) Polyurethane seal.

**Seals:** A high quality machine-applied full perimeter UL listed Polyurethane seal foamed in place (FIP) provides excellent sealing over a long life. Temperature resistance -40°C to 80°C (160°C short term loading).

**Lock:** Grade 316 stainless steel 8mm square bit insert quarter turn lock with key.



Part Number	Size
SKU	H x W x D (mm)
IP-SSHMI303015	300 H x 300 W x 150 D
IP-SSHMI304015	300 H x 400 W x 150 D
IP-SSHMI304025	300 H x 400 W x 250 D
IP-SSHMI354515	350 H x 450 W x 150 D
IP-SSHMI354525	350 H x 450 W x 250 D
IP-SSHMI406015	400 H x 600 W x 150 D
IP-SSHMI406025	400 H x 600 W x 250 D

# Accessories

## Support Arm Systems



Support arm systems enable safe operator access to HMI's and enable strategic positioning of visual display outputs.



**IP Enclosures provide support arm systems for HMI enclosures designed for ease of assembly and operator accessibility. Support arms enable safe operator access to HMI's and enable strategic positioning of visual display outputs.**

**IP-045 – Light Duty Support Arm System**

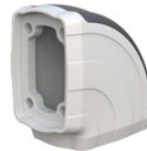
Designed for light loads and short spans. It has a modular structure and modern design. Consists of a wide range of components for various configurations. It has a carrying capacity of 40kg for a 1m profile length.



**IP-045-L\***  
45mm x 72mm Support Profile  
\*L=250mm, 500mm or 750mm



**IP-045-800**  
Wall Socket



**IP-045-420**  
90° Angle



**IP-045-500**  
Rotating Intermediate Hinge



**IP-045-600**  
Rotating Top Mounted 90°



**IP-045-700**  
Rotating Wall-Mounted Horizontal



**IP-045-400**  
Rotating Panel 90° Coupling



**IP-045-830**  
Rotating Panel Adaptor Vertical

**IP-060 – Medium Duty Support Arm System**

Designed for medium loads and long spans. It has a modular structure and modern design. Consists of a wide range of components for various configurations. It has a carrying capacity of 60kg for a 1m profile length. It is suitable for VESA Mounting also known as VESA Mounting Interface Standard or Flat Display Mounting Interface (FDMI) for mounting monitors.



**IP-060-L\*\***  
53mm x 85mm Support Profile  
\*\*L=500mm, 1000mm or 1500mm



**IP-060-800**  
Wall Socket



**IP-060-420**  
90° Angle



**IP-060-500**  
Rotating Intermediate Hinge



**IP-060-600**  
Rotating Top Mounted 90°



**IP-060-710**  
Rotating Wall Mounted 90°



**IP-060-700**  
Rotating Wall-Mounted Horizontal



**IP-060-610**  
Rotating Top Mounted Vertical



**IP-060-400**  
Rotating Panel 90° Coupling



**IP-060-843**  
Tilting Enclosure Adaptor



**IP-060-835**  
Tilting Enclosure Adaptor



**IP-060-836**  
Tilting VESA Adaptor

*Note: For details on the full range of profile and fittings, contact IP Enclosures.*



IP ENCLOSURES PTY LTD  
ABN 17 168 921 319  
Head Office: 19-27 Fred Chaplin Circuit, Bells Creek QLD 4551  
[sales@ipenclosures.com.au](mailto:sales@ipenclosures.com.au) | [www.ipenclosures.com.au](http://www.ipenclosures.com.au)  
T: 1300 576 094 | + 61 7 5450 1489  
GLOBAL DISTRIBUTION: UK Europe USA UAE NZ Asia-Pacific