



# PRODUCT BROCHURE

GRP Electrical Enclosures

# GRP Electrical Enclosures

## Glass-Fibre Reinforced Polyester

**P1**

**SINGLE DOOR | IP65, IP66**



The P1 range of GRP electrical enclosures are corrosion resistant, providing protection against corrosion in coastal environments and installations prone to exposure to chemicals and solvents.

## Features & Specifications

The P1 range of GRP electrical enclosures are designed to house electrical switch and control equipment in harsh environments that require high levels of corrosion resistance.

**Protection:** IP65 to IP66 (Refer to table)

**Standard:** IEC62208, IEC/EN/AS60529

### Basic Parameters:

- Temperature Operating Conditions: -50°C to 85°C
- Flammability Category: V0
- Protection Class: II
- Impact Resistance: IK10
- Halogen-Free Materials

### Material:

- Body: Glass-Fibre Reinforced Polyester (GRP)
- Door: Glass-Fibre Reinforced Polyester (GRP)
- Device Mounting Plate: Polyester (Optional: Steel)
- Seal: Polyurethane

**Body:** The robust body is manufactured from Glass-Fibre Reinforced Polyester (GRP). Pre-fitted encapsulated nuts are incorporated to accommodate mounting to eliminate drilling and retain IP rating. Integral device plate mounts are also provided.

**Door:** The door is manufactured from Glass-Fibre Reinforced Polyester (GRP). It incorporates concealed removable hinges and is designed to be reversible (left or right hand opening). A transparent door with window is also available.

**Seal:** Polyurethane.

**Lock:** The IP65 model is fitted with two quarter turn locks. The IP66 model is fitted with up to 4-point locking.

**Device Mounting Plate:** A polyester device mounting plate is provided pre-fitted. (Optional steel device mounting plates are available).

**Colour:** RAL7035

## Benefits of GRP

SMC (Sheet Molding Compound) is a composite of unsaturated polyester resin reinforced with glass fiber (12-50 mm long) as well as mineral filler and other additives. In addition to basic components such as polyester resin, fibre-glass and filler, SMC contains various additives in the form of thickeners, anti-adhesive agents and flame retardants.

- Very good mechanical properties
- Resistance to high temperature
- Fire-resistance (self-extinguishing plastic)
- High resistance to low temperatures
- Resistance to weather conditions (UV)
- High insulation
- Easy machining (for holes and cutouts)
- Very good anti-corrosion properties
- Lightweight construction



## GRP ENCLOSURES | Screwed/Keyed | IP66

Part Number	Enclosure Size	Mounting Plate	Lock Type	Mount Type	Accessories
SKU	H x W x D (mm)	H x W (mm)	Keyed/Screwed	Pole Mount	Steel Mount Plate
IP-GRP303010	306H x 284W x 115D	270 x 230	Keyed	Standard	IP-GRPSMP3030
IP-GRP303010-B	306H x 284W x 115D	270 x 230	Keyed	Pole-Mount*	IP-GRPSMP3030
IP-GRP303010-S	306H x 284W x 115D	270 x 230	Screwed	Standard	IP-GRPSMP3030
IP-GRP303010-SB	306H x 284W x 115D	270 x 230	Screwed	Pole-Mount*	IP-GRPSMP3030

Items marked with an asterisk "\*" are provided with pole mount attachment molded into rear of enclosure.

## GRP ENCLOSURES | 2 x Quarter Turn Locks | IP65

Part Number	Enclosure Size	Mounting Plate	Accessories		
SKU	H x W x D (mm)	H x W (mm)	Steel Mount Plate	Inner Door	DB Kit
IP-GRP404020	405H x 411W x 211D	350 x 340	IP-GRPSMP4040	-	IP-GRPDB4040
IP-GRP504020	505H x 411W x 211D	450 x 440	IP-GRPSMP5040	-	IP-GRPDB5040
IP-GRP604020	605H x 411W x 211D	550 x 540	IP-GRPSMP6040	-	IP-GRPDB6040
IP-GRP604025	618H x 438W x 251D	550 x 360	IP-GRPSDP6040	IP-GRPID6040	IP-GRPDB604025
IP-GRP806030	816H x 616W x 323D	740 x 530	IP-GRPSDP8060	IP-GRPID8060	IP-GRPDB806030
IP-GRP1008530	1004H x 850W x 323D	925 x 755	IP-GRPSDP10085	IP-GRPID10085	IP-GRPDB1008530

## GRP ENCLOSURES | Swing Handle up to 4 Point Locking | IP66

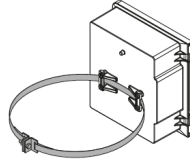
Part Number	Enclosure Size	Mounting Plate	Accessories		
SKU	H x W x D (mm)	H x W (mm)	Steel Mount Plate	Inner Door	DB Kit
IP-GRP404020-H	405H x 411W x 211D	350 x 340	IP-GRPSMP4040	-	IP-GRPDB4040
IP-GRP504020-H	505H x 411W x 211D	450 x 440	IP-GRPSMP5040	-	IP-GRPDB5040
IP-GRP604020-H	605H x 411W x 211D	550 x 540	IP-GRPSMP6040	-	IP-GRPDB6040
IP-GRP604025-H	618H x 438W x 251D	550 x 360	IP-GRPSDP6040	IP-GRPID6040	IP-GRPDB604025
IP-GRP806030-H	816H x 616W x 323D	740 x 530	IP-GRPSDP8060	IP-GRPID8060	IP-GRPDB806030
IP-GRP1008530-H	1004H x 850W x 323D	925 x 755	IP-GRPSDP10085	IP-GRPID10085	IP-GRPDB1008530

## GRP ENCLOSURES with WINDOW | 2 x Quarter Turn Locks | IP65

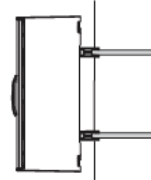
Part Number	Enclosure Size	Mounting Plate	Accessories		
SKU	H x W x D (mm)	H x W (mm)	Steel Mount Plate	Inner Door	DB Kit
IP-GRP604025-T	618H x 438W x 251D	550 x 360	IP-GRPSDP6040	IP-GRPID6040	IP-GRPDB604025
IP-GRP806030-T	816H x 616W x 323D	740 x 530	IP-GRPSDP8060	IP-GRPID8060	IP-GRPDB806030

## POLE MOUNT BRACKET for GRP ENCLOSURES

Type of Enclosure	Pole Mount Bracket
IP-GRP3030B/SB	IP-9126001*
IP-GRP604025	IP-GRPUN20K3
IP-GRP806030	IP-GRPUN30K3
IP-GRP1008530	IP-GRPUPN20K3



IP-GRP9126001



IP-GRPPUN20K3  
IP-GRPUN30K3  
IP-GRPUPN20K3  
(Quantity 2 per set)



## REAR COVER CAPS



Type of Enclosure	Rear Cover Caps
IP-GRP6040	IP-GRPZHTF46
IP-GRP8060	IP-GRPZHTF68
IP-GRP10085	IP-GRPZHTF68

## PRESSURE VALVE & DRAIN



Part Number	Description
IP-GRPDA084	IP55 Pressure Compensation Valve
IP-GRPDA284	IP66 Pressure Compensation Valve
IP-GRPDD084	Condensate Drain

## WALL MOUNT BRACKETS



Part Number	Description
IP-GRPUMOK3	Mounting Feet - Set of 4

(Quantity 4 per set)

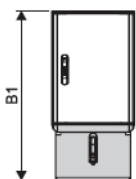
## DOOR STAY



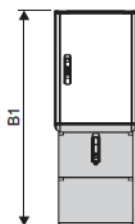
Part Number	Description
IP-GRPBDH1	Door Stay for GRP Electrical Enclosure

## BASES & PEDESTAL

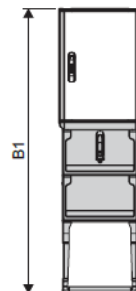
Type of Enclosure	TYPE 1		TYPE 2		TYPE 3	
SKU	B1 (mm)	SKU	B1 (mm)	SKU	B1 (mm)	SKU
IP-GRP604025	911	IP-GRP604025-B1	1155	IP-GRP604025-B2	1536	IP-GRP604025-B3
IP-GRP806030	1109	IP-GRP806030-B1	1353	IP-GRP806030-B2	1734	IP-GRP806030-B3
IP-GRP1008530	1296	IP-GRP1008530-B1	1540	IP-GRP1008530-B2	1922	IP-GRP1008530-B3



TYPE 1



TYPE 2



TYPE 3



# GRP Electrical Enclosure Accessories

## Distribution Board Kits



Distribution Board Kits are designed to be easily fitted to GRP Electrical Enclosures.

## Features & Specifications

IP Enclosures Distribution Kits are designed to be easily fitted to IP Enclosures GRP electrical enclosures without drilling.

**Chassis Material:** Galv Sheet Steel

**DIN Rail Material:** 7.5 x 35 High quality DIN Rail manufactured from galv steel for increased corrosion resistance. Standard 35mm wide symmetrical TS35 DIN Rail compatible with EN50022 and DIN46277-3.

**Escutcheon Plates:** Glass-Fibre Reinforced Polyester (GRP). Tool removable.

**Colour:** RAL7035



### DB Kits for IP65 GRP Electrical Enclosures

Enclosure	Enclosure Size	Accessories	No. Pole
SKU	H x W x D (mm)	DB Kit	Rows x Qty = Qty Pole
IP-GRP404020	405H x 411W x 211D	IP-GRPDB4040	2 Rows x 16 = 32 Pole
IP-GRP504020	505H x 411W x 211D	IP-GRPDB5040	3 Rows x 16 = 48 Pole
IP-GRP604020	605H x 411W x 211D	IP-GRPDB6040	3 Rows x 16 = 48 Pole
IP-GRP604025	618H x 438W x 251D	IP-GRPDB604025	3 Rows x 16 = 48 Pole
IP-GRP806030	816H x 616W x 323D	IP-GRPDB806030	5 Rows x 26 = 130 Pole
IP-GRP1008530	1004H x 850W x 323D	IP-GRPDB1008530	6 Rows x 39 = 234 Pole

Enclosure	Enclosure Size	Accessories	No. Pole
SKU	H x W x D (mm)	DB Kit	Rows x Qty = Qty Pole
IP-GRP604025-T	618H x 438W x 251D	IP-GRPDB604025	3 Rows x 16 = 48 Pole
IP-GRP806030-T	816H x 616W x 323D	IP-GRPDB806030	5 Rows x 26 = 130 Pole

### DB Kits for IP66 GRP Electrical Enclosures

Enclosure	Enclosure Size	Accessories	No. Pole
SKU	H x W x D (mm)	DB Kit	Rows x Qty = Qty Pole
IP-GRP404020-H	405H x 411W x 211D	IP-GRPDB4040	2 Rows x 16 = 32 Pole
IP-GRP504020-H	505H x 411W x 211D	IP-GRPDB5040	3 Rows x 16 = 48 Pole
IP-GRP604020-H	605H x 411W x 211D	IP-GRPDB6040	3 Rows x 16 = 48 Pole
IP-GRP604025-H	618H x 438W x 251D	IP-GRPDB604025	3 Rows x 16 = 48 Pole
IP-GRP806030-H	816H x 616W x 323D	IP-GRPDB806030	5 Rows x 26 = 130 Pole
IP-GRP1008530-H	1004H x 850W x 323D	IP-GRPDB1008530	6 Rows x 39 = 234 Pole





IP ENCLOSURES PTY LTD  
ABN 17 168 921 319  
Head Office: 19-27 Fred Chaplin Circuit, Bells Creek QLD 4551  
sales@ipenclosures.com.au | www.ipenclosures.com.au  
T: 1300 576 094 | + 61 7 5450 1489  
GLOBAL DISTRIBUTION: UK Europe USA UAE NZ Asia-Pacific