



PRODUCT BROCHURE

Infrastructure Field Cabinets

Mounted Electrical Enclosures

S1

Steel | Powder Coated

SINGLE DOOR | IP66



Powder coated galvanised steel single door enclosures are available in T33 Smoke Blue (Smooth Finish) suitable for infrastructure and road/traffic management projects.

Features & Specifications

Powder coated galvanised steel single door enclosures are available in T33 Smoke Blue (Smooth Finish) suitable for infrastructure and road/traffic management projects.

Protection: Complies with IP66 IK10, NEMA 4

Standard: IEC62208, IEC/EN/AS60529, RoHS

Material:

- Body: 1.2mm to 1.5mm galvanised steel sheet
- Gland Plate: 1.5mm galvanised steel sheet
- Door: 1.5mm galvanised steel sheet
- Device Mounting Plate: 1.5mm galvanised steel sheet
- Seal: Polyurethane. UL listed.

Body: The robust monoblock body is fabricated using galvanised steel sheet (1.2mm-1.5mm). Flat face sealing surfaces are provided to increase seal life. Pre-fitted blind nutserts are incorporated to accommodate mounts and accessory fasteners to eliminate drilling and retain IP rating.

Single Door: The robust surface mounted door is fabricated using 1.5mm galvanised steel sheet and incorporates concealed removable hinges with captive pins. The door is designed for a 110° opening. Each door contains cable management rails, an M6 earth stud and a high quality machine-applied foamed in place (FIP) Polyurethane seal.

Lock: Chrome 5mm double bit insert quarter turn lock with key.

Device Mounting Plate: The device mounting plate is fabricated using 1.5mm galvanised steel sheet, pressed to provide additional strength and supplied pre-fitted into the enclosure as standard.

Surface Treatment: UL approved epoxy polyester powder coated with a smooth finish. 80-120 micron average thickness.

Colour: T33 Smoke Blue (Smooth Finish)

Part Number	Enclosure Size	Device Plate
Standard	H x W x D (mm)	H x W (mm)
IP-302015-T33	300 x 200 x 150	250 x 130
IP-302515-T33	300 x 250 x 150	250 x 180
IP-303015-T33	300 x 300 x 150	250 x 230
IP-303020-T33	300 x 300 x 200	250 x 230
IP-403020-T33	400 x 300 x 200	350 x 230
IP-404020-T33	400 x 400 x 200	350 x 330
IP-505025-T33	500 x 500 x 250	450 x 430
IP-604020-T33	600 x 400 x 200	550 x 330
IP-604030-T33	600 x 400 x 300	550 x 330
IP-606020-T33	600 x 600 x 200	550 x 530
IP-606030-T33	600 x 600 x 300	550 x 530
IP-804030-T33	800 x 400 x 300	750 x 330
IP-806030-T33	800 x 600 x 300	750 x 530



Mounted Electrical Enclosures

A1

Marine Grade Aluminium | Powder Coated

SINGLE DOOR | IP66



Powder coated marine grade aluminium single door enclosures are available in T33 Smoke Blue (Smooth Finish) suitable for infrastructure and road/traffic management projects.

Features & Specifications

Powder coated marine grade aluminium single door enclosures are available in T33 Smoke Blue (Smooth Finish) suitable for infrastructure and road/traffic management projects.

Protection: IP66

Standard: IEC62208, IEC/EN/AS60529, RoHS

Material:

- Body: Marine Grade Aluminium 5754-H111
- Gland Plate: Marine Grade Aluminium 5754-H111
- Door: Marine Grade Aluminium 5754-H111
- Device Mounting Plate: 1.5mm galvanised steel sheet
- Enclosure Seal: Polyurethane

Body: The robust monoblock body is fabricated using marine grade aluminium. Flat face sealing surfaces are provided to increase seal life. Pre-fitted blind nuts are incorporated to accommodate mounts and accessory fasteners to eliminate drilling and retain IP rating.

Single Door: The robust surface mounted door is fabricated using marine grade aluminium and incorporates concealed removable hinges with captive pins. The door is designed for a 110° opening. Each door contains cable management rails, an M6 earth stud and a high quality machine-applied foamed in place (FIP) Polyurethane seal.

Lock: Chrome 5mm double bit insert quarter turn lock with key.

Device Mounting Plate: The device mounting plate is fabricated using 1.5mm galvanised steel sheet, pressed to provide additional strength and supplied pre-fitted into the enclosure as standard.

Surface Treatment: UL approved epoxy polyester powder coated with a smooth finish. 80-120 micron average thickness.

Colour: T33 Smoke Blue (Smooth Finish)

Part Number	Enclosure Size	Device Plate
Standard	H x W x D (mm)	H x W (mm)
IP-A302015-T33	300 x 200 x 150	250 x 130
IP-A302515-T33	300 x 250 x 150	250 x 180
IP-A303015-T33	300 x 300 x 150	250 x 230
IP-A303020-T33	300 x 300 x 200	250 x 230
IP-A403020-T33	400 x 300 x 200	350 x 230
IP-A404020-T33	400 x 400 x 200	350 x 330
IP-A505025-T33	500 x 500 x 250	450 x 430
IP-A604020-T33	600 x 400 x 200	550 x 330
IP-A604030-T33	600 x 400 x 300	550 x 330
IP-A606020-T33	600 x 600 x 200	550 x 530
IP-A606030-T33	600 x 600 x 300	550 x 530
IP-A804030-T33	800 x 400 x 300	750 x 330
IP-A806030-T33	800 x 600 x 300	750 x 530



Mounted Infrastructure Field Cabinets

FC

Steel | Powder Coated

SINGLE DOOR | IP66



Pole-mounted field cabinets house sensitive data network and electrical equipment for heavy duty outdoor applications including road/traffic management and intelligent transport systems.

Features & Specifications

Pole-Mounted infrastructure field cabinets are designed to house sensitive data network and electrical equipment for a variety of outdoor applications.

Protection: IP66 (Non-Ventilated range); IP55 (Ventilated Range)

Standard: IEC62208, IEC/EN/AS60529, EIA-310-D, RoHS

Material:

- Body: 1.5mm galvanised steel sheet
- Door: 2.0mm galvanised steel sheet
- 19" Data Rack Rails: 1.5mm galvanised steel sheet (IP-706032-T33 & IP-706032-0-T33 only)
- Enclosure Seal: Polyurethane

Body: The robust monoblock body is fabricated using 1.5mm galvanised steel sheet. Flat face sealing surfaces increase seal life. Pre-fitted blind nuts are incorporated to accommodate pole mount bracket to eliminate drilling and retain IP rating. Integral device plate mounts and M6 earth stud are included. Fan/filter cutouts and hinged vent hoods are provided as standard. Non-ventilated option is also available. (Fans and filters are ordered separately).

Door: The front door is fabricated using 2.0mm galvanised steel sheet and is designed to provide flush recessed mounting to prevent vandalism and unauthorised access. The door incorporates concealed removable hinges with captive pins. It is hinged on the left side and is provided with a heavy duty door stay. An A4 plan pocket is provided.

19" Data Rack Rails: Front and rear 19" data rack rails are fabricated from 1.5mm galvanised steel sheet.

Door Seals: Polyurethane foamed in place (FIP) full perimeter door seals provide excellent sealing over a long life. Temperature resistance: -40°C to 80°C.

Locks: 3 point locking system with key-lock swing handle.

Surface Treatment: UL approved epoxy polyester powder coated with a smooth finish. 80-120 micron average thickness. Colour T33 Smoke Blue.

Accessory: Pole Mount Bracket (One-piece, full height). Powder coated, colour T33. Refer to table for part number.



Ventilated	Non-Ventilated	Description	Pole Mount Bracket
Part Number/SKU	Part Number/SKU	U/RU H x W x D	Part Number/SKU
IP-453522-T33	IP-453522-0-T33	450H x 350W x 225D	IP-PMB45
IP-654532-T33	IP-654532-0-T33	650H x 450W x 325D	IP-PMB65
IP-706032-T33	IP-706032-0-T33	12RU x 600W x 325D	IP-PMB70

Mounted Infrastructure Field Cabinets

Marine Grade Aluminium | Powder Coated

FCA

SINGLE DOOR | IP66



Marine grade aluminium pole-mounted field cabinets house sensitive data network and electrical equipment for outdoor applications including road/traffic management and intelligent transport systems.

Features & Specifications

Marine grade aluminium pole-mounted infrastructure field cabinets are designed to house sensitive data network and electrical equipment for a variety of harsh outdoor applications.

Protection: IP66 (Non-Ventilated range); IP55 (Ventilated Range)

Standard: IEC62208, IEC/EN/AS60529, EIA-310-D, RoHS

Material:

- Body: 2.5mm Marine Grade Aluminium 5754-H111
- Door: 2.5mm Marine Grade Aluminium 5754-H111
- 19" Data Rack Rails: 1.5mm galvanised steel sheet (IP-A706032-T33 & IP-A706032-0-T33 only)
- Enclosure Seal: Polyurethane

Body: The robust monoblock body is fabricated using 2.5mm marine grade aluminium. Flat face sealing surfaces increase seal life. Pre-fitted blind nuts are incorporated to accommodate pole mount bracket to eliminate drilling and retain IP rating. Integral device plate mounts and M6 earth stud are included. Fan/filter cutouts and hinged vent hoods are provided as standard. Non-ventilated option is also available. (Fans and filters are ordered separately).

Door: The front door is fabricated using 2.5mm marine grade aluminium and is designed to provide flush recessed mounting to prevent vandalism and unauthorised access. The door incorporates concealed removable hinges with captive pins. It is hinged on the left side and is provided with a heavy duty door stay. An A4 plan pocket is provided.

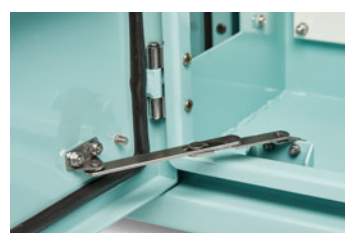
19" Data Rack Rails: Front and rear 19" data rack rails are fabricated from 1.5mm galvanised steel sheet.

Door Seals: Polyurethane foamed in place (FIP) full perimeter door seals provide excellent sealing over a long life. Temperature resistance: -40°C to 80°C.

Locks: 3 point locking system with key-lock swing handle.

Surface Treatment: UL approved epoxy polyester powder coated with a smooth finish. 80-120 micron average thickness. Colour T33 Smoke Blue.

Accessory: Pole Mount Bracket (One-piece, full height). Grade 304 stainless steel, powder coated, colour T33. Refer to table for part number.



Ventilated	Non-Ventilated	Description	Pole Mount Bracket
Part Number/SKU	Part Number/SKU	U/RU H x W x D	Part Number/SKU
IP-A453522-T33	IP-A453522-0-T33	450H x 350W x 225D	IP-APMB45
IP-A654532-T33	IP-A654532-0-T33	650H x 450W x 325D	IP-APMB65
IP-A706032-T33	IP-A706032-0-T33	12RU x 600W x 325D	IP-APMB70

Infrastructure Field Cabinets

FC-SS1

Stainless Steel Grade 316/316L (Optional 304)

SINGLE DOOR | IP66



Stainless Steel Pole-Mounted Field Cabinets are designed to house sensitive data network and electrical equipment for a variety of heavy duty outdoor applications including infrastructure, rail, road/traffic management and general industrial applications.

Features & Specifications

Stainless Steel Field Cabinets include a device mounting plate, inner door escutcheon, 3 point locking, plan pocket, cutouts and vent hoods for fans and filters, and a matte finish to prevent glare and reflection.

Protection: IP66 (Non-Ventilated range); IP55 (Ventilated Range)

Standard: IEC62208, IEC/EN/AS60529, EIA-310-D, RoHS

Material:

- Body: 1.5mm Grade 316/316L Stainless Steel – Matte Finish
- Door & Inner Door: 1.5mm Grade 316/316L Stainless Steel (Matte Finish outer door)
- Device Mounting Plate: 1.5mm Galvanised Steel Sheet
- Seal: Polyurethane

Body: The robust monoblock body is fabricated using 1.5mm Grade 316/316L Stainless Steel. Flat face sealing surfaces are provided to increase seal life. Pre-fitted blind nuts are incorporated to accommodate mounting to eliminate drilling and retain IP rating. Integral device plate mounts and M6 earth studs are provided. Fan/filter cutouts and vent hoods are provided as standard. (Fans and filters are ordered separately). Matte Finish (To provide an anti-glare, non-reflective finish).

Door & Inner Door: The robust surface mounted door is fabricated using 1.5mm Grade 316/316L Stainless Steel and incorporates concealed removable hinges with captive pins. It includes an M6 earth stud and a high quality machine-applied foamed in place (FIP) Polyurethane seal. A door stay is and an A4 plan pocket are provided with the outer door. An Inner Door is provided fitted. The outer door is provided with a Matte Finish (To provide an anti-glare, non-reflective finish).

Door Seals: Polyurethane foamed in place (FIP) full perimeter door seals provide excellent sealing over a long life. Temperature resistance: -40°C to 80°C.

Locks: The outer door includes a 3 point locking system with key-lock swing handle. The inner door includes a standard grade 316 stainless steel 8mm square quarter turn lock.

Device Mounting Plate: The device mounting plate is 1.5mm galvanised steel sheet. It is pressed to provide strength. It is pre-fitted into the enclosure as standard.

FC-SS1



Ventilated	Non-Ventilated	Description
Part Number/SKU	Part Number/SKU	H x W x D
IP-SSFC603032	IP-SSFC603032-0	600H x 300W x 325D
IP-SSFC605032	IP-SSFC605032-0	600H x 500W x 325D
IP-SSFC805032	IP-SSFC805032-0	800H x 500W x 325D

Infrastructure & ITS Field Cabinets

FC

Steel | Powder Coated

FRONT & REAR DOORS | IP66



Plinth-mounted field cabinets house sensitive data network and electrical equipment for heavy duty outdoor applications including road/traffic management and intelligent transport systems.

Features & Specifications

Infrastructure field cabinets are designed to house sensitive data network and electrical equipment for a variety of outdoor applications.

Protection: IP66 (Non-Ventilated range); IP55 (Ventilated Range)

Standard: IEC62208, IEC/EN/AS60529, EIA-310-D, RoHS

Material:

- Body and Plinth: 2.0mm galvanised steel sheet
- Doors: 2.0mm galvanised steel sheet
- 19" Data Rack Rails: 1.5mm galvanised steel sheet
- Gland Plate: 3.0mm aluminium
- Enclosure Seal: Polyurethane

Body: The robust monoblock body is fabricated using 2.0mm galvanised steel. The body is fitted with rain hood/sunshield, plinth, vent hoods and 4 x lifting eye bolts. Flat face sealing surfaces are provided to increase seal life. A split gland plate is incorporated into the base. Four cutouts 125mm x 125mm are provided to house fans and filters and each are covered with removable vent hoods.

Doors: The front and rear doors are fabricated using 2.0mm galvanised steel sheet and are designed to provide flush recessed mounting to prevent vandalism and unauthorised access. The doors incorporate concealed removable hinges with captive pins. They are provided with heavy duty door stays.

19" Data Rack Rails: Front and rear 19" data rack rails are fabricated from 1.5mm galvanised steel sheet.

Door Seals: Polyurethane foamed in place (FIP) full perimeter door seals provide excellent sealing over a long life. Temperature resistance: -40°C to 80°C.

Locks: Each door includes a 3 point locking system with key-lock swing handle.

Gland Plate: 3mm aluminium split gland plates are incorporated into the base.

Surface Treatment: UL approved epoxy polyester powder coated with a smooth finish. 80-120 micron average thickness. Colour T33 Smoke Blue.

Ventilated	Non-Ventilated	Description
Part Number/SKU	Part Number/SKU	U/RU H x W x D
IP-1077562-T33	IP-1077562-0-T33	18RU 1075H x 750W x 620D
IP-1077580-T33	IP-1077580-0-T33	18RU 1075H x 750W x 800D
IP-1377562-T33	IP-1377562-0-T33	24RU 1375H x 750W x 620D
IP-1377580-T33	IP-1377580-0-T33	24RU 1375H x 750W x 800D
IP-1677562-T33	IP-1677562-0-T33	30RU 1675H x 750W x 620D
IP-1677580-T33	IP-1677580-0-T33	30RU 1675H x 750W x 800D
IP-1977562-T33	IP-1977562-0-T33	36RU 1975H x 750W x 620D
IP-1977580-T33	IP-1977580-0-T33	36RU 1975H x 750W x 800D
IP-2277562-T33	IP-2277562-0-T33	42RU 2275H x 750W x 620D
IP-2277580-T33	IP-2277580-0-T33	42RU 2275H x 750W x 800D



Infrastructure & ITS Field Cabinets

FC

Steel | Powder Coated

SINGLE & DOUBLE BAY with FRONT, REAR & SIDE DOORS | IP66



IP Enclosures infrastructure and ITS field cabinets are available in single bay with side doors, and double bay with side doors, ventilated and non-ventilated.

Features & Specifications

IP Enclosures Infrastructure and ITS field cabinets are available in single bay with side doors and double bay with side doors, ventilated and non-ventilated.

SINGLE BAY with FRONT, REAR & SIDE DOORS

Protection: IP66 (Non-Ventilated range); IP55 (Ventilated Range)

Standard: IEC62208, IEC/EN/AS60529, EIA-310-D, RoHS

Material:

- Body and Plinth: 2.0mm galvanised steel sheet
- Doors: 2.0mm galvanised steel sheet
- 19" Data Rack Rails: 1.5mm galvanised steel sheet
- Gland Plate: 3.0mm aluminium
- Enclosure Seal: Polyurethane

Specifications are generally as per standard front & rear door unit, except:

- 900mm wide
- Side door included
- 3 x Sliding shelves included
- 1 x Fixed shelf included

Ventilated	Non-Ventilated	Description
Part Number/SKU	Part Number/SKU	U/RU H x W x D
IP-1409062-T33	IP-1409062-0-T33	24RU 1400H x 900W x 620D (with Side Door)
IP-1709062-T33	IP-1709062-0-T33	30RU 1700H x 900W x 620D (with Side Door)
IP-2009062-T33	IP-2009062-0-T33	37RU 2000H x 900W x 620D (with Side Door)

DOUBLE BAY with 2 x SIDE DOORS

Protection: IP66 (Non-Ventilated range); IP55 (Ventilated Range)

Standard: IEC62208, IEC/EN/AS60529, EIA-310-D, RoHS

Materials and specifications are generally as per standard front & rear door unit, except:

- 1800mm wide
- Double bay (2 x 19" Racks)
- 2 x Side doors included
- 6 x Sliding shelves included (3 per bay)
- 2 x Fixed shelf included (1 per bay)

Ventilated	Non-Ventilated	Description
Part Number/SKU	Part Number/SKU	U/RU H x W x D
IP-14018062-T33	IP-14018062-0-T33	24RU 1400H x 1800W x 620D (Double Bay, 2 Side Doors)
IP-17018062-T33	IP-17018062-0-T33	30RU 1700H x 1800W x 620D (Double Bay, 2 Side Doors)
IP-20018062-T33	IP-20018062-0-T33	37RU 2000H x 1800W x 620D (Double Bay, 2 Side Doors)



Infrastructure & ITS Field Cabinets

FCA

Marine Grade Aluminium | Powder Coated

FRONT & REAR DOORS | IP66



Marine grade aluminium plinth-mounted field cabinets house sensitive data network and electrical equipment for heavy duty outdoor applications including road/traffic management and intelligent transport systems.

Features & Specifications

Marine grade aluminium infrastructure field cabinets are designed to house sensitive data network and electrical equipment for a variety of outdoor applications.

Protection: IP66 (Non-Ventilated range); IP55 (Ventilated Range)

Standard: IEC62208, IEC/EN/AS60529, EIA-310-D, RoHS

Material:

- Body and Plinth: 2.5mm Marine Grade Aluminium 5754-H111
- Doors: 2.5mm Marine Grade Aluminium 5754-H111
- 19" Data Rack Rails: 1.5mm galvanised steel sheet
- Gland Plate: 3.0mm Aluminium
- Enclosure Seal: Polyurethane

Body: The robust monoblock body is fabricated using 2.5mm marine grade aluminium. The body is fitted with rain hood/sunshield, plinth, vent hoods and 4 x lifting eye bolts. Flat face sealing surfaces are provided to increase seal life. A split gland plate is also incorporated into the base. Four cutouts 125mm x 125mm are provided to house fans and filters and each are covered with removable vent hoods.

Doors: The front and rear doors are fabricated using 2.5mm marine grade aluminium and are designed to provide flush recessed mounting to prevent vandalism and unauthorised access. The doors incorporate concealed removable hinges with captive pins. They are provided with heavy duty door stays.

19" Data Rack Rails: Front and rear 19" data rack rails are fabricated from 1.5mm galvanised steel sheet.

Door Seals: Polyurethane foamed in place. Temperature resistance: -40°C to 80°C.

Locks: Each door includes a 3 point locking system with key-lock swing handle.

Gland Plate: 3mm aluminium split gland plates are incorporated into the base.

Surface Treatment: UL approved epoxy polyester powder coated with a smooth finish. 80-120 micron average thickness. Colour T33 Smoke Blue.

Ventilated	Non-Ventilated	Description
Part Number/SKU	Part Number/SKU	U/RU H x W x D
IP-A1077562-T33	IP-A1077562-0-T33	18RU 1075H x 750W x 620D
IP-A1077580-T33	IP-A1077580-0-T33	18RU 1075H x 750W x 800D
IP-A1377562-T33	IP-A1377562-0-T33	24RU 1375H x 750W x 620D
IP-A1377580-T33	IP-A1377580-0-T33	24RU 1375H x 750W x 800D
IP-A1677562-T33	IP-A1677562-0-T33	30RU 1675H x 750W x 620D
IP-A1677580-T33	IP-A1677580-0-T33	30RU 1675H x 750W x 800D
IP-A1977562-T33	IP-A1977562-0-T33	36RU 1975H x 750W x 620D
IP-A1977580-T33	IP-A1977580-0-T33	36RU 1975H x 750W x 800D
IP-A2277562-T33	IP-A2277562-0-T33	42RU 2275H x 750W x 620D
IP-A2277580-T33	IP-A2277580-0-T33	42RU 2275H x 750W x 800D



Infrastructure & ITS Field Cabinets

FCA

Marine Grade Aluminium | Powder Coated

SINGLE & DOUBLE BAY with FRONT, REAR & SIDE DOORS | IP66



Marine grade aluminium infrastructure and ITS field cabinets are available in single bay with side doors, and double bay with side doors, ventilated and non-ventilated.

Features & Specifications

Marine grade aluminium infrastructure and ITS field cabinets are available in single bay with side doors and double bay with side doors, ventilated and non-ventilated.

SINGLE BAY with FRONT, REAR & SIDE DOORS

Protection: IP66 (Non-Ventilated range); IP55 (Ventilated Range)

Standard: IEC62208, IEC/EN/AS60529, EIA-310-D, RoHS

Material:

- Body and Plinth: 2.5mm Marine Grade Aluminium 5754-H111
- Doors: 2.5mm Marine Grade Aluminium 5754-H111
- 19" Data Rack Rails: 1.5mm galvanised steel sheet
- Gland Plate: 3.0mm Aluminium
- Enclosure Seal: Polyurethane

Specifications are generally as per standard front & rear door unit, except:

- 900mm wide
- Side door included
- 3 x Sliding shelves included
- 1 x Fixed shelf included

Ventilated	Non-Ventilated	Description
Part Number/SKU	Part Number/SKU	U/RU H x W x D
IP-A1409062-T33	IP-A1409062-O-T33	24RU 1400H x 900W x 620D (with Side Door)
IP-A1709062-T33	IP-A1709062-O-T33	30RU 1700H x 900W x 620D (with Side Door)
IP-A2009062-T33	IP-A2009062-O-T33	37RU 2000H x 900W x 620D (with Side Door)

DOUBLE BAY with 2 x SIDE DOORS

Protection: IP66 (Non-Ventilated range); IP55 (Ventilated Range)

Standard: IEC62208, IEC/EN/AS60529, EIA-310-D, RoHS

Materials and specifications are generally as per standard front & rear door unit, except:

- 1800mm wide
- Double bay (2 x 19" Racks)
- 2 x Side doors included
- 6 x Sliding shelves included (3 per bay)
- 2 x Fixed shelf included (1 per bay)

Ventilated	Non-Ventilated	Description
Part Number/SKU	Part Number/SKU	U/RU H x W x D
IP-A14018062-T33	IP-A14018062-O-T33	24RU 1400H x 1800W x 620D (Double Bay, 2 Side Doors)
IP-A17018062-T33	IP-A17018062-O-T33	30RU 1700H x 1800W x 620D (Double Bay, 2 Side Doors)
IP-A20018062-T33	IP-A20018062-O-T33	37RU 2000H x 1800W x 620D (Double Bay, 2 Side Doors)



Infrastructure Field Cabinet - Accessories



IP Enclosures provide a range of standard accessories for infrastructure field cabinets including fixed shelves and sliding shelves.

Features & Specifications

Fixed Shelf Kits

Fixed shelf kits have many uses and can be used for component storage and battery storage. Shelves are ventilated. They are provided with fasteners and can be easily fitted without drilling.

Material: Galvanised steel sheet.

Surface Treatment: UL approved epoxy polyester powder coated with a textured finish. 80-120 micron average thickness. Colour RAL7035.

Part Number/SKU	Description
IP-FCSHL7562	Light Duty Shelf to suit 750W x 620D Field Cabinet
IP-FCSHH7562	Heavy Duty Shelf to suit 750W x 620D (250kg max. load)
IP-FCSHH7580	Heavy Duty Shelf to suit 750W x 800D (250kg max. load)



Sliding Shelf Kits (Laptop Drawers)

Sliding shelf kits (Laptop drawer kits) are provided assembled complete with 4 screws for fast and easy fitting without drilling.

Material: Galvanised steel sheet.

Surface Treatment: UL approved epoxy polyester powder coated with a textured finish. 80-120 micron average thickness. Colour RAL7035.

Part Number/SKU	Description
IP-FCDRAWER	Laptop Drawer to suit 750W x 620D Field Cabinet
IP-FCDRAWER800	Laptop Drawer to suit 750W x 800D Field Cabinet



General Accessories

Device mounting plates, document storage pockets and cage nuts:

Part Number/SKU	Description
IP-12RUDP	12RU Rack Mounted Device Mounting Plate
IP-18RUDP	18RU Rack Mounted Device Mounting Plate
IP-13762DP	Device Plate for 1375H x 620D Field Cabinet (Side Mount)
IP-16762DP	Device Plate for 1675H x 620D Field Cabinet (Side Mount)
IP-19762DP	Device Plate for 1975H x 620D Field Cabinet (Side Mount)
IP-FCPPA3-T33	A4 Document Storage Pocket
IP-M6SCREW-CAGENUT	M6 Cage Nut & Screw (Pack of 50)



Features & Specifications

19" Accessories

Standard: Compatible with 19" racks EIA-310-D, RoHS

Slotted Din Rail Material: Electrogalvanised Steel 7.5 x 35 RoHS Compliant. Standard 35mm wide symmetrical TS35 DIN Rail compatible with EN50022 and DIN46277-3.

1RU 19" DIN Terminal Rail

Part Number: IP-SDDINPANEL1

1RU 19" Cover Panel

Part Number: IP-SDCOVER1

1RU 19" Cover Panel (Ventilated)

Part Number: IP-EMH1



2RU 19" DIN Terminal Rail

Part Number: IP-SDDINPANEL2

2RU 19" Cover Panel

Part Number: IP-SDCOVER2

2RU 19" Cover Panel (Ventilated)

Part Number: IP-EMH2



3RU 19" DIN Terminal Rail

Part Number: IP-SDDINPANEL3

3RU 19" Cover Panel

Part Number: IP-SDCOVER3

3RU 19" Cover Panel (Ventilated)

Part Number: IP-EMH3



3RU 19" Distribution Board

Part Number: IP-SDDP3

(Supplied with Cover Panel)



1RU 19" DIN Rail Shelf - Single

Part Number: IP-SDDINSHELF1-150

1RU 19" DIN Rail Shelf - Double

Part Number: IP-SDDINSHELF1-250



Features & Specifications

19" Accessories

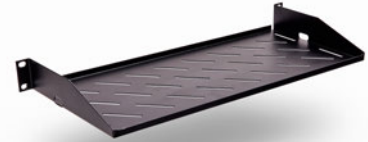
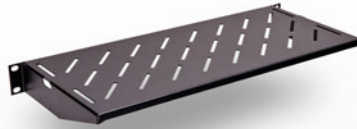
Standard: Compatible with 19" racks EIA-310-D, RoHS

1RU 19" Fixed Shelves

Part Number: IP-RCLF120
Depth: 200mm

Part Number: IP-RCLF130
Depth: 300mm

Part Number: IP-RCLF140
Depth: 400mm

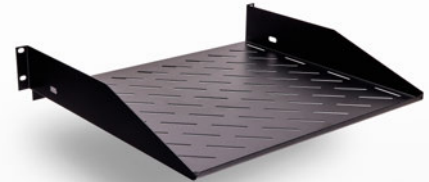


Can be used in either orientation

2RU 19" Fixed Shelves

Part Number: IP-RCLF240
Depth: 400mm

Part Number: IP-RCLF250
Depth: 500mm



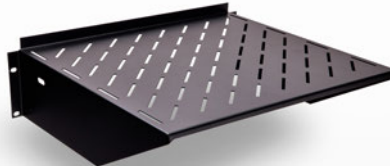
Can be used in either orientation

3RU 19" Fixed Shelves

Part Number: IP-RCLF340
Depth: 400mm

Part Number: IP-RCLF350
Depth: 500mm

Part Number: IP-RCLF360
Depth: 600mm

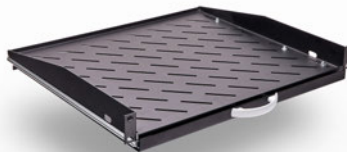


Can be used in either orientation

1RU 19" Sliding Shelf

Part Number: IP-RCHF130
Depth: 225mm

Part Number: IP-RCHF140
Depth: 325mm



19" Rack Mounted Enclosure Bracket

Part Number: IP-RACKBRACKET4025-SET
Depth: 254.5mm

(1 Set = 2 x brackets as shown including fasteners)





IP ENCLOSURES PTY LTD

ABN 17 168 921 319

Head Office: 19-27 Fred Chaplin Circuit, Bells Creek QLD 4551

sales@ipenclosures.com.au | www.ipenclosures.com.au

T: 1300 576 094 | + 61 7 5450 1489

GLOBAL DISTRIBUTION: UK Europe USA UAE NZ Asia-Pacific