

# PRODUCT BROCHURE

19" Data Racks

# Mounted IP66 19" Data Racks

**SDW**

Steel | Powder Coated

**SINGLE DOOR | IP66**



The IP Enclosures SDW range of wall mounted IP66 19" data racks are designed for heavy duty outdoor applications to house sensitive data network equipment in harsh environments. They are suitable for internal and external installations. All IP Enclosures are built to precision to ensure consistent high quality standards.

## Features & Specifications

# SDW

**IP Enclosures SDW range of IP66 19" data racks are designed for heavy duty outdoor applications to house sensitive data network equipment in harsh environments. They are suitable for internal and external installations. All IP Enclosures are built to precision to ensure consistent high quality standards.**

**Protection:** Complies with IP66 IK10

**Standard:** AS/EN/IEC60529, EIA-310-D, RoHS 

### Material:

- Enclosure Body: 1.5mm galvanised steel sheet
- Enclosure Door: 1.5mm galvanised steel sheet
- 19" Data Rack Rails: 1.5mm galvanised steel sheet
- Enclosure Seal: Polyurethane. UL listed.

**Body & 19" Rails:** The robust monoblock body is 1.5mm galvanised steel sheet. Flat face sealing surfaces increase seal life. Pre-fitted blind nuts are incorporated to accommodate wall mounting brackets to eliminate drilling to retain IP rating. The profiled roof design protrudes past the seal, flush with the front of the door face. A galvanised steel gland plate is also incorporated into the bottom face. 19" data rack rails are fitted. 600mm deep racks include front and rear rails.

**Door:** The surface mounted door is 1.5mm galvanised steel sheet. It incorporates concealed removable hinges with captive pins. Doors are also designed for a 110° opening. Each door incorporates a high quality machine-applied foamed in place (FIP) Polyurethane seal.

**Seal:** A high quality machine-applied full perimeter UL listed Polyurethane seal foamed in place (FIP) provides excellent sealing over a long life. Temperature resistance -40°C to 80°C (160°C short term loading).

**Lock:** Chrome 5mm double bit insert quarter turn lock with key. A full range of locking solutions are available upon request.

**Gland Plate:** Gland plates are incorporated into the bottom face of the enclosure for cable management. The size and quantity vary according to enclosure size.

**Surface Treatment:** UL approved epoxy polyester powder coated with a textured finish 80-120 micron average thickness.

- Standard Colour: RAL7035 (*Other colours available upon request*).

**Accessories:** A range of data rack accessories are available.



Part Number	Size	Accessories	Part Number Suffix
Standard	U/RU x Depth (mm)	Transparent Door	Optional Colours
IP-SDW4RU30	4RU x 300 Deep 19" Data Rack	-	-BLK
IP-SDW6RU30	6RU x 300 Deep 19" Data Rack	IP-3060WINDOOR	-BLK
IP-SDW6RU40	6RU x 400 Deep 19" Data Rack	IP-3060WINDOOR	-BLK
IP-SDW9RU40	9RU x 400 Deep 19" Data Rack	-	-BLK
IP-SDW12RU40	12RU x 400 Deep 19" Data Rack	IP-6060WINDOOR	-BLK
IP-SDW12RU60	12RU x 600 Deep 19" Data Rack	IP-6060WINDOOR	-BLK



# Mounted IP66 19" Data Racks

**ADW**

Marine Grade Aluminium | Powder Coated

**SINGLE DOOR | IP66**



The IP Enclosures ADW range of aluminium wall mounted IP66 19" data racks are designed for heavy duty outdoor applications to house sensitive data network equipment in harsh environments. They are suitable for internal and external installations. All IP Enclosures are built to precision to ensure consistent high quality standards.

## Features & Specifications

# ADW

IP Enclosures ADW range of aluminium IP66 19" data racks are designed for heavy duty outdoor applications to house sensitive data network equipment in harsh environments. They are suitable for internal and external installations. All IP Enclosures are built to precision to ensure consistent high quality standards.

**Protection:** Complies with IP66 IK10

**Standard:** AS/EN/IEC60529, EIA-310-D, RoHS

**Material:**

- Enclosure Body: 1.5mm Marine Grade Aluminium 5754-H111
- Enclosure Door: 1.5mm Marine Grade Aluminium 5754-H111
- Enclosure Seal: Polyurethane. UL listed.

**Body:** The robust monoblock body is fabricated from 1.5mm marine grade aluminium sheet. Flat face sealing surfaces increase seal life. Pre-fitted blind nutserts are incorporated to accommodate wall mounting brackets to eliminate drilling to retain IP rating. The profiled roof design protrudes past the seal, flush with the front of the door face. 19" data rack rails are fitted. 600mm deep racks include front and rear rails.

**Door:** The surface mounted door is fabricated from 1.5mm aluminium sheet. It incorporates concealed removable hinges with captive pins. Doors are also designed for a 110° opening. Each door incorporates a high quality machine-applied foamed in place (FIP) Polyurethane seal.

**Seal:** A high quality machine-applied full perimeter UL listed Polyurethane seal foamed in place (FIP) provides excellent sealing over a long life. Temperature resistance -40°C to 80°C (160°C short term loading).

**Lock:** Chrome 5mm double bit insert quarter turn lock with key. A full range of locking solutions are available upon request.

**Gland Plate:** Gland plates are incorporated into the bottom face of the enclosure for cable management. The size and quantity vary according to enclosure size.

**Surface Treatment:** UL approved epoxy polyester powder coated with a textured finish 80-120 micron average thickness.

- Standard Colour: RAL7035 Light Grey and RAL9005 Jet Black are standard colours. *(Other colours available upon request).*

**Accessories:** A range of data rack accessories are available.



Part Number	Size	Accessories	Part Number Suffix
Standard	U/RU x Depth (mm)	Transparent Door	Optional Colours
IP-ADW4RU30	4RU x 300 Deep 19" Data Rack	-	-BLK
IP-ADW6RU30	6RU x 300 Deep 19" Data Rack	IP-A3060WINDOOR	-BLK
IP-ADW6RU45	6RU x 450 Deep 19" Data Rack	IP-A3060WINDOOR	-BLK
IP-ADW9RU45	9RU x 450 Deep 19" Data Rack	-	-BLK
IP-ADW12RU45	12RU x 450 Deep 19" Data Rack	IP-A6060WINDOOR	-BLK
IP-ADW12RU60	12RU x 600 Deep 19" Data Rack	IP-A6060WINDOOR	-BLK

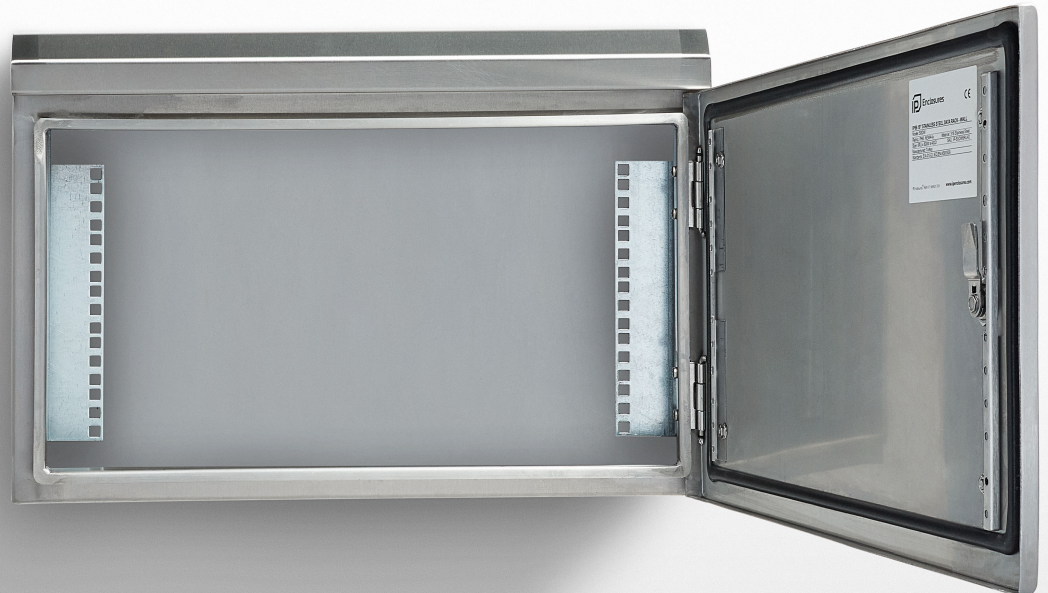


# Mounted IP66 19" Data Racks

**SSDW**

Stainless Steel Grade 316/316L (Optional 304)

**SINGLE DOOR | IP66**



The IP Enclosures SSDW range of stainless steel wall mounted IP66 19" data racks are designed for extreme duty to house sensitive data network equipment in harsh environments. They are suitable for internal and external installations.

## Features & Specifications

The IP Enclosures SSDW range of stainless steel wall mounted IP66 19" data racks are designed for extreme duty to house sensitive data network equipment in harsh environments. They are suitable for internal and external installations. All IP Enclosures are built to precision to ensure consistent high quality standards.

**Protection:** Complies with IP66 IK10

**Standard:** AS/EN/IEC60529, EIA-310-D, RoHS

**Material:**

- Body: 1.5mm Grade 316/316L Stainless Steel (Optional 304)
- Door: 1.5mm Grade 316/316L Stainless Steel (Optional 304)
- 19" Data Rack Rails: 1.5mm galvanised steel sheet
- Seal: Polyurethane

**Surface Finish:** 0.4 micron Ra surface brushed finish

**Body:** The robust monoblock body is fabricated using 1.5mm Grade 316/316L Stainless Steel. Cutting, pressing and full continuous seam welding using precision automated manufacturing equipment to ensure accuracy and consistent high quality. Flat face sealing surfaces are provided to increase seal life. A stainless steel gland plate is also incorporated into the bottom face. Adjustable 19" data rack rails are provided fitted.

**Door:** The robust surface mounted door is fabricated using 1.5mm Grade 316/316L Stainless Steel and incorporates concealed removable hinges with captive pins. The door is designed for a 110° opening and contains integral cable management rail studs, M6 earth stud and a high quality machine-applied foamed in place (FIP) Polyurethane seal. Two internal cable management rails can be removed to provide additional space for equipment, duct and door mounted control components.

**Seal:** A high quality machine-applied full perimeter UL listed Polyurethane seal foamed in place (FIP) provides excellent sealing over a long life. Temperature resistance -40°C to 80°C (160°C short term loading).

**Lock:** Grade 316 Stainless Steel 8mm square drive quarter turn lock with key. A full range of locking solutions are available upon request.



Part Number	Optional	Size
<b>Grade 316</b>	<b>Grade 304</b>	<b>U/RU x Depth (mm)</b>
IP-SSDW4RU30	IP-304-DW4RU30	4RU x 300 Deep 19" Data Rack
IP-SSDW6RU30	IP-304-DW6RU30	6RU x 300 Deep 19" Data Rack
IP-SSDW6RU45	IP-304-DW6RU45	6RU x 450 Deep 19" Data Rack
IP-SSDW9RU45	IP-304-DW9RU45	9RU x 450 Deep 19" Data Rack
IP-SSDW12RU45	IP-304-DW12RU45	12RU x 450 Deep 19" Data Rack
IP-SSDW12RU60	IP-304-DW12RU60	12RU x 600 Deep 19" Data Rack

# Floor Standing IP66 19" Data Racks

## Steel | Powder Coated

**SD**

**SINGLE DOOR | IP66**



The IP Enclosures SD range of floor standing IP66 19" data racks are designed for heavy duty outdoor applications to house sensitive data network equipment in harsh environments. They are suitable for internal and external installations. All IP Enclosures are built to precision to ensure consistent high quality standards.



## Features & Specifications

**IP Enclosures SD range of IP66 19" data racks are designed for heavy duty outdoor applications to house sensitive data network equipment in harsh environments.**

**Protection:** Complies with IP66 IK10

**Standard:** AS/EN/IEC60529, EIA-310-D, RoHS 

**Material:**

- Enclosure Body: 1.5mm galvanised steel sheet
- Enclosure Door: 1.5mm galvanised steel sheet
- 19" Data Rack Rails: 1.5mm galvanised steel sheet
- Enclosure Seal: Polyurethane

**Body:** The robust monoblock body is 1.5mm galvanised steel sheet. Flat face sealing surfaces increase seal life. A gland plate is also incorporated into the bottom face.

**Door/s:** The surface mounted door is 1.5mm galvanised steel sheet. It incorporates concealed removable hinges with captive pins. Doors are also designed for a 110° opening.

**Door Seal:** A high quality full perimeter seal provides excellent sealing over a long life. It is machine applied Polyurethane foamed in place (FIP).

**Lock:** 3 point locking system with key-lock swing handle. A full range of locking solutions are available upon request.

**Gland Plate:** Gland plates with seals are incorporated into the bottom face of the enclosure for cable management.

**Surface Treatment:** UL approved epoxy polyester powder coated with a textured finish. 80-120 micron average thickness. Standard Colour: RAL7035.

**Extra Heavy Duty:** Items marked below as Extra Heavy Duty are constructed to withstand heavy loads associated with heavy equipment such as battery storage. Front and rear access doors are also provided. (Standard range has front door only, with a fixed rear panel).

Part Number	Size	No. of U (RU)	Cabinet Size	Type
SKU	19"	U/RU	U/RU H x W x D (mm)	
IP-SD606040	19"	12RU	12RU 650 x 600 x 400	Standard
IP-SD806040	19"	16RU	16RU 850 x 600 x 400	Standard
IP-SD806060	19"	16RU	16RU 850 x 600 x 600	Standard
IP-SD806080	19"	16RU	16RU 850 x 600 x 800	Standard
IP-SD1206040	19"	24RU	24RU 1200 x 600 x 400	Standard
IP-SD1206060	19"	24RU	24RU 1200 x 600 x 600	Standard
IP-SD1206080	19"	24RU	24RU 1200 x 600 x 800	Standard
IP-SD1676080	19"	30RU	30RU 1670 x 600 x 800	Extra Heavy Duty
IP-SD1606060	19"	32RU	32RU 1600 x 600 x 600	Standard
IP-SD1976080	19"	36RU	36RU 1970 x 600 x 800	Extra Heavy Duty
IP-SD2006060	19"	42RU	42RU 2000 x 600 x 600	Standard
IP-SD2006080	19"	42RU	42RU 2000 x 600 x 800	Standard



# Floor Standing IP66 19" Data Racks

## Stainless Steel Grade 316/316L

**SSD**

**SINGLE DOOR | IP66**



The IP Enclosures SSD range of stainless steel floor standing IP66 19" data racks are designed for extreme duty to house sensitive data network equipment in harsh environments. They are suitable for internal and external installations. All IP Enclosures are built to precision to ensure consistent high quality standards.

## Features & Specifications

**IP Enclosures SSD range of IP66 19" stainless steel data racks are designed for extreme duty to house sensitive data network equipment in harsh environments. They are suitable for internal and external installations.**

**Protection:** Complies with IP66 IK10

**Standard:** AS/EN/IEC60529, EIA-310-D, RoHS 

**Material:**

- Enclosure Body: 1.5mm Grade 316/316L Stainless Steel
- Enclosure Door: 1.5mm Grade 316/316L Stainless Steel
- 19" Data Rack Rails: 1.5mm galvanised steel sheet
- Enclosure Seal: Polyurethane

**Surface Finish:** 0.4 micron Ra surface brushed finish

**Body:** The robust monoblock body is fabricated using 1.5mm Grade 316/316L Stainless Steel. Cutting, pressing and full continuous seam welding using precision automated manufacturing equipment to ensure accuracy and consistent high quality. Flat face sealing surfaces are provided to increase seal life. A stainless steel gland plate with seal is also incorporated into the bottom face.

**Door:** The robust surface mounted door is fabricated using 1.5mm Grade 316/316L Stainless Steel and incorporates concealed removable hinges with captive pins. The door is designed for a 110° opening. Each door contains a high quality machine-applied foamed in place (FIP) Polyurethane seal.

**Door Seal:** A high quality machine-applied continuous foamed in place (FIP) Polyurethane seal provides excellent sealing over a long life.

**Lock:** 3 point locking system with key-lock swing handle. A full range of locking solutions are available upon request.

**Gland Plate:** Gland plates are incorporated into the bottom face of the enclosure for cable management. They are provided with gaskets and fasteners. The size and quantity vary according to enclosure size.

Part Number	Size	No. of U (RU)	Cabinet Size
SKU	19"	U/RU	U/RU H x W x D (mm)
IP-SSD606040	19"	12RU	12RU 650 x 600 x 400
IP-SSD806040	19"	16RU	16RU 850 x 600 x 400
IP-SSD806060	19"	16RU	16RU 850 x 600 x 600
IP-SSD806080	19"	16RU	16RU 850 x 600 x 800
IP-SSD1206040	19"	24RU	24RU 1200 x 600 x 400
IP-SSD1206060	19"	24RU	24RU 1200 x 600 x 600
IP-SSD1206080	19"	24RU	24RU 1200 x 600 x 800
IP-SSD1606060	19"	32RU	32RU 1600 x 600 x 600
IP-SSD2006060	19"	42RU	42RU 2000 x 600 x 600
IP-SSD2006080	19"	42RU	42RU 2000 x 600 x 800





## Accessories

### 19" Data Rack Accessories

## 19" Accessories



The IP Enclosures range of 19" rack-mounted DIN rail, distribution panels and shelves provide flexibility to fit DIN mounted electrical and control components into 19" racks.

## Features & Specifications

# 19" Accessories

**Standard:** Compatible with 19" racks EIA-310-D, RoHS

**Slotted Din Rail Material:** Electrogalvanised Steel 7.5 x 35 RoHS Compliant. Standard 35mm wide symmetrical TS35 DIN Rail compatible with EN50022 and DIN46277-3.

### 1RU 19" DIN Terminal Rail

Part Number: IP-SDDINPANEL1

### 1RU 19" Cover Panel

Part Number: IP-SDCOVER1

### 1RU 19" Cover Panel (Ventilated)

Part Number: IP-EMH1



### 2RU 19" DIN Terminal Rail

Part Number: IP-SDDINPANEL2

### 2RU 19" Cover Panel

Part Number: IP-SDCOVER2

### 2RU 19" Cover Panel (Ventilated)

Part Number: IP-EMH2



### 3RU 19" DIN Terminal Rail

Part Number: IP-SDDINPANEL3

### 3RU 19" Cover Panel

Part Number: IP-SDCOVER3

### 3RU 19" Cover Panel (Ventilated)

Part Number: IP-EMH3



### 3RU 19" Distribution Board

Part Number: IP-SDDP3

(Supplied with Cover Panel)



### 1RU 19" DIN Rail Shelf - Single

Part Number: IP-SDDINSHELF1-150

### 1RU 19" DIN Rail Shelf - Double

Part Number: IP-SDDINSHELF1-250



## Features & Specifications

# 19" Accessories

**Standard:** Compatible with 19" racks EIA-310-D, RoHS

### 1RU 19" Fixed Shelves

Part Number: IP-RCLF120

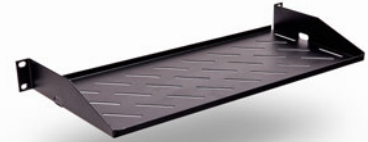
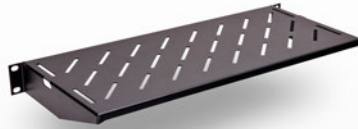
Depth: 200mm

Part Number: IP-RCLF130

Depth: 300mm

Part Number: IP-RCLF140

Depth: 400mm



Can be used in either orientation

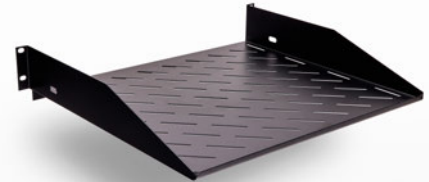
### 2RU 19" Fixed Shelves

Part Number: IP-RCLF240

Depth: 400mm

Part Number: IP-RCLF250

Depth: 500mm



Can be used in either orientation

### 3RU 19" Fixed Shelves

Part Number: IP-RCLF340

Depth: 400mm

Part Number: IP-RCLF350

Depth: 500mm

Part Number: IP-RCLF360

Depth: 600mm



Can be used in either orientation

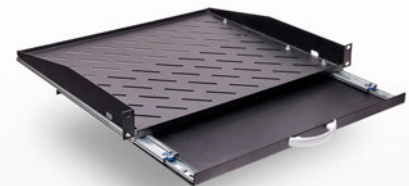
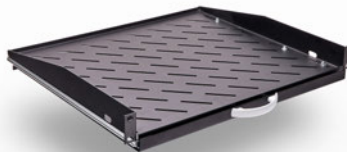
### 1RU 19" Sliding Shelf

Part Number: IP-RCHF130

Depth: 225mm

Part Number: IP-RCHF140

Depth: 325mm



### 19" Rack Mounted Enclosure Bracket

Part Number: IP-RACKBRACKET4025-SET

Depth: 254.5mm

(1 Set = 2 x brackets as shown including fasteners)





## Features & Specifications

## 19" Accessories

### 80mm Castors/Wheels

Part Number: IP-080RMB

80mm Castors/Wheels - Set of 2  
Wheel Size: 80mm  
Wheel Width: 30mm  
Load Capacity: 120kg (Per wheel)



### 80mm Castors/Wheels with Brake

Part Number: IP-080FRMB

80mm Castors/Wheels with Brake - Set of 2  
Wheel Size: 80mm  
Wheel Width: 30mm  
Load Capacity: 120kg (Per wheel)



### Adjustable Feet (Set of 4)

Part Number: IP-TAM10X70



## Electronic Access Control Locks

Access control and monitoring for IP Enclosures Data Racks.

Australian made patented stainless steel high security electronic locks provide a keyless, highly secure and convenient entry solution. A range of entry pads are available including keypads, biometric fingerprint access and Bluetooth smartphone access. High security restricted key options are also available.  
(Requires door accessory for mounting. Available upon request. Contact IP Enclosures)



**Keypad Entry**  
IP-LE1 - Safe Lock with  
Electronic Entry Keypad



**LED Keypad Entry**  
IP-LE2 - Safe Lock with  
LED Electronic Entry Keypad



**Biometric Fingerprint Entry**  
IP-LE3 - Safe Lock with  
Biometric Entry Keypad



**Smartphone Entry (Siri, App)**  
IP-LE4 - Safe Lock with  
Bluetooth Entry



IP ENCLOSURES PTY LTD

ABN 17 168 921 319

Head Office: 19-27 Fred Chaplin Circuit, Bells Creek QLD 4551

[sales@ipenclosures.com.au](mailto:sales@ipenclosures.com.au) | [www.ipenclosures.com.au](http://www.ipenclosures.com.au)

T: 1300 576 094 | + 61 7 5450 1489

GLOBAL DISTRIBUTION: UK Europe USA UAE NZ Asia-Pacific