

# SSP Pushbutton Enclosure

# IP-304-P4X2

304 STAINLESS STEEL | FLAT ROOF | IP66 | IP67 | IP69K

250H x 160W x 100D

The IP Enclosures SSP range of Flat Roof Stainless Steel Pushbutton Enclosures are designed for use in the harshest environments. They are provided with Ø22.5mm holes. They are available in 1 hole, 2 hole, 3 hole, 4 hole, 6 hole and 8 hole configurations. They are provided with a silicon seal that is resistant to harsh chemicals. Our full range of Pushbutton Enclosures are made in Italy using the highest quality materials and processes.

**Protection:** IP66, IP67, IP69K, NEMA 4x

**Standards (& Conformities):** IEC/EN/AS60529, UL508A, RoHS



**Material:**

- Body: 1.0mm Grade 304 Stainless Steel
- Lid/Door: 1.0mm Grade 304 Stainless Steel
- Seal: Silicone
- Washer: NBR 70 (Nitrile Butadiene Rubber)

**Body:** The robust monoblock body is fabricated using 1.0mm Grade 304 Stainless Steel. The flat roof option includes encapsulated mounting nutserts for concealed mounting.

**Lid/Door:** The robust pre-drilled lid/door is fabricated using 1.0mm Grade 304 Stainless Steel and is fastened using screws. The screws are provided with NBR 70 (Nitrile Butadiene Rubber) washers for use in harsh environments where hydrocarbons are present.

**Seal:** A high quality Silicone seal.

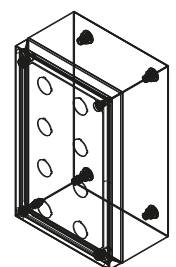
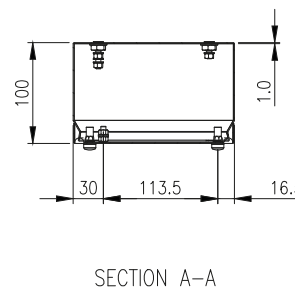
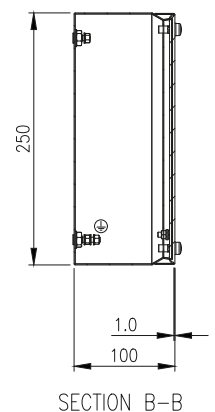
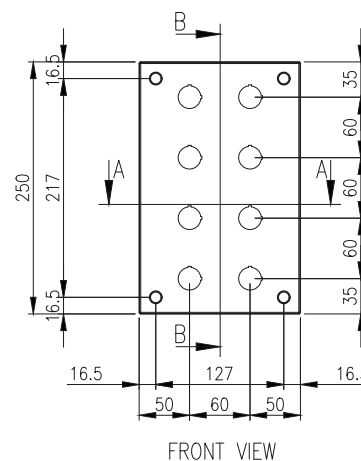
**Surface Finish:** 0.4 micron Ra surface brushed finish.

**Hole:** 8x (2 columns of 4) Ø22.5mm.

**Hole Center:** 60mm.

**Useable Depth:** 77mm.

**Mass:** 1.84Kg.



SSP Pushbutton Enclosure

IP-304-P4X2

304 STAINLESS STEEL | FLAT ROOF | IP66 | IP67 | IP69K

250H x 160W x 100D

ACCESSORIES:

Part Number	Description
IP-304-FMB	304 Stainless Steel Flat Wall Mounting Brackets for Terminal Boxes (Set of 4)
IP-SST-FWMB	304 Stainless Steel Flat Brackets for Terminal Boxes (Set of 4)
IP-SST-RWMB	304 Stainless Steel Raised Brackets for Terminal Boxes (Set of 4)

Products are manufactured to Quality, Safety and Environmental Standards.

**WARRANTY:** 5 years.