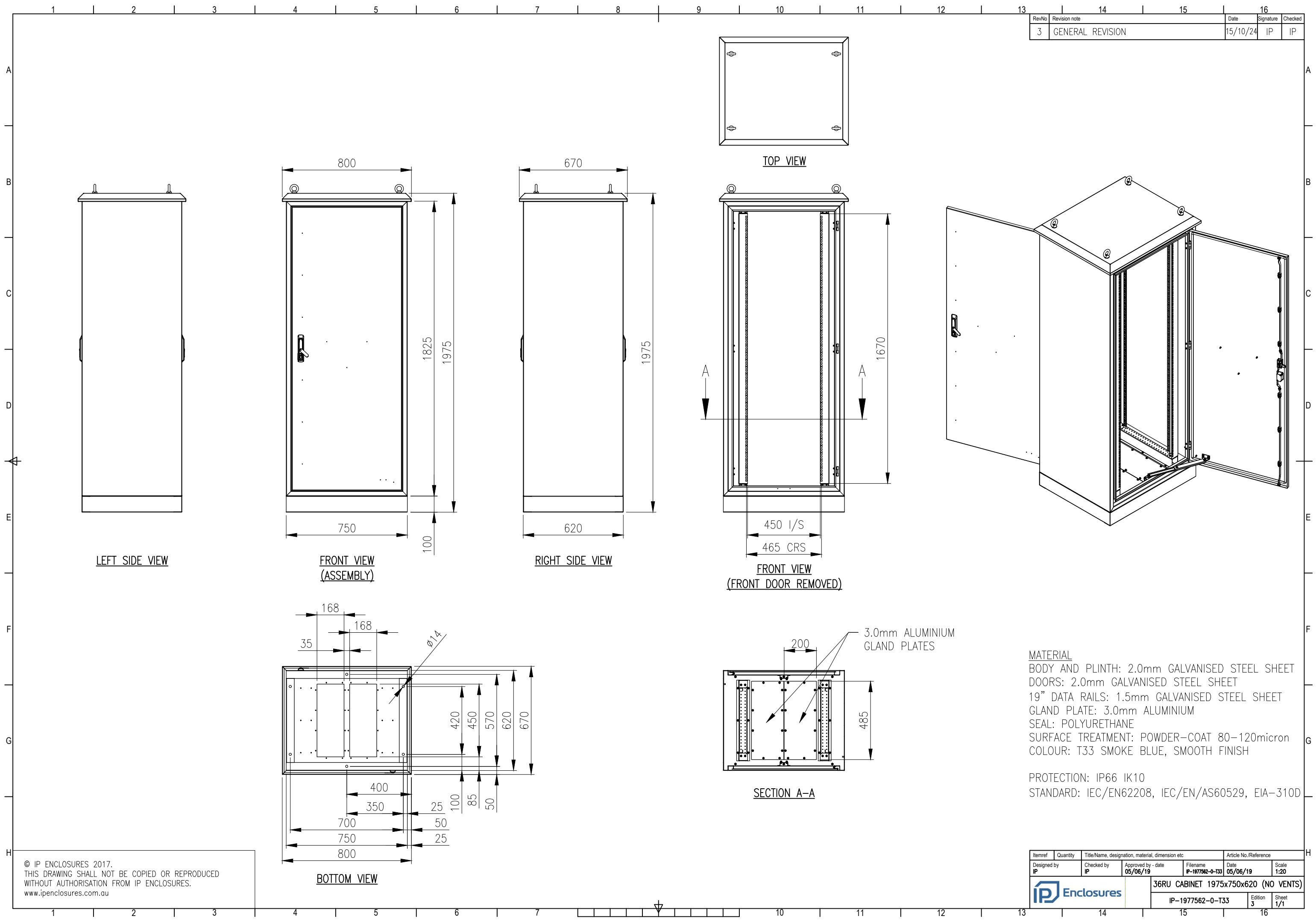


RevNo	Revision note	Date	Signature	Checked
3	GENERAL REVISION	15/10/24	IP	IP



MATERIAL
 BODY AND PLINTH: 2.0mm GALVANISED STEEL SHEET
 DOORS: 2.0mm GALVANISED STEEL SHEET
 19" DATA RAILS: 1.5mm GALVANISED STEEL SHEET
 GLAND PLATE: 3.0mm ALUMINIUM
 SEAL: POLYURETHANE
 SURFACE TREATMENT: POWDER-COAT 80-120micron
 COLOUR: T33 SMOKE BLUE, SMOOTH FINISH

PROTECTION: IP66 IK10
 STANDARD: IEC/EN62208, IEC/EN/AS60529, EIA-310D

Itemref	Quantity	Title/Name, designation, material, dimension etc	Article No./Reference
IP	1	36RU CABINET 1975x750x620 (NO VENTS)	IP-1977562-0-T33
IP	1	3.0mm ALUMINIUM GLAND PLATES	IP-1977562-0-T33

© IP ENCLOSURES 2017.
 THIS DRAWING SHALL NOT BE COPIED OR REPRODUCED
 WITHOUT AUTHORISATION FROM IP ENCLOSURES.
 www.ipenclosures.com.au



36RU CABINET 1975x750x620 (NO VENTS)
 IP-1977562-0-T33

Edition 3
 Sheet 1/1